



Beaufort County
Public Works
Stormwater Infrastructure
Project Summary

Project Summary: Rivers End Subdivision - Ashepoop Drive

Activity: Routine/Preventive Maintenance

Narrative Description of Project:

Installed inlet drain for runoff and sod for erosion control.

Completion: Nov-15

2016-538 / Rivers End Subdivision	Labor Hours	Labor Cost	Equipment Cost	Material Cost	Contractor Cost	Indirect Labor	Total Cost
AUDIT / Audit Project	0.5	\$11.75	\$0.00	\$0.00	\$0.00	\$6.62	\$18.36
CBINS / Catch basin - installed	12.0	\$263.70	\$10.62	\$283.11	\$0.00	\$168.48	\$725.91
HAUL / Hauling	2.0	\$44.54	\$15.98	\$21.47	\$0.00	\$28.84	\$110.83
ONJV / Onsite Job Visit	8.0	\$284.86	\$28.40	\$20.64	\$0.00	\$205.25	\$539.15
PRRECON / Project Reconnaissance	33.0	\$726.70	\$24.78	\$12.04	\$0.00	\$465.22	\$1,228.74
SD / Soft Digging	4.0	\$91.52	\$17.36	\$18.10	\$0.00	\$59.40	\$186.38
SI / Sod - Installation	8.0	\$178.20	\$7.08	\$3.44	\$0.00	\$114.36	\$303.08
UTLOC / Utility locates	0.5	\$12.35	\$0.00	\$0.00	\$0.00	\$6.62	\$18.97
2016-538 / Rivers End Subdivision Sub Total	68.0	\$1,613.62	\$104.22	\$358.80	\$0.00	\$1,054.78	\$3,131.41
Grand Total	68.0	\$1,613.62	\$104.22	\$358.80	\$0.00	\$1,054.78	\$3,131.41

Before

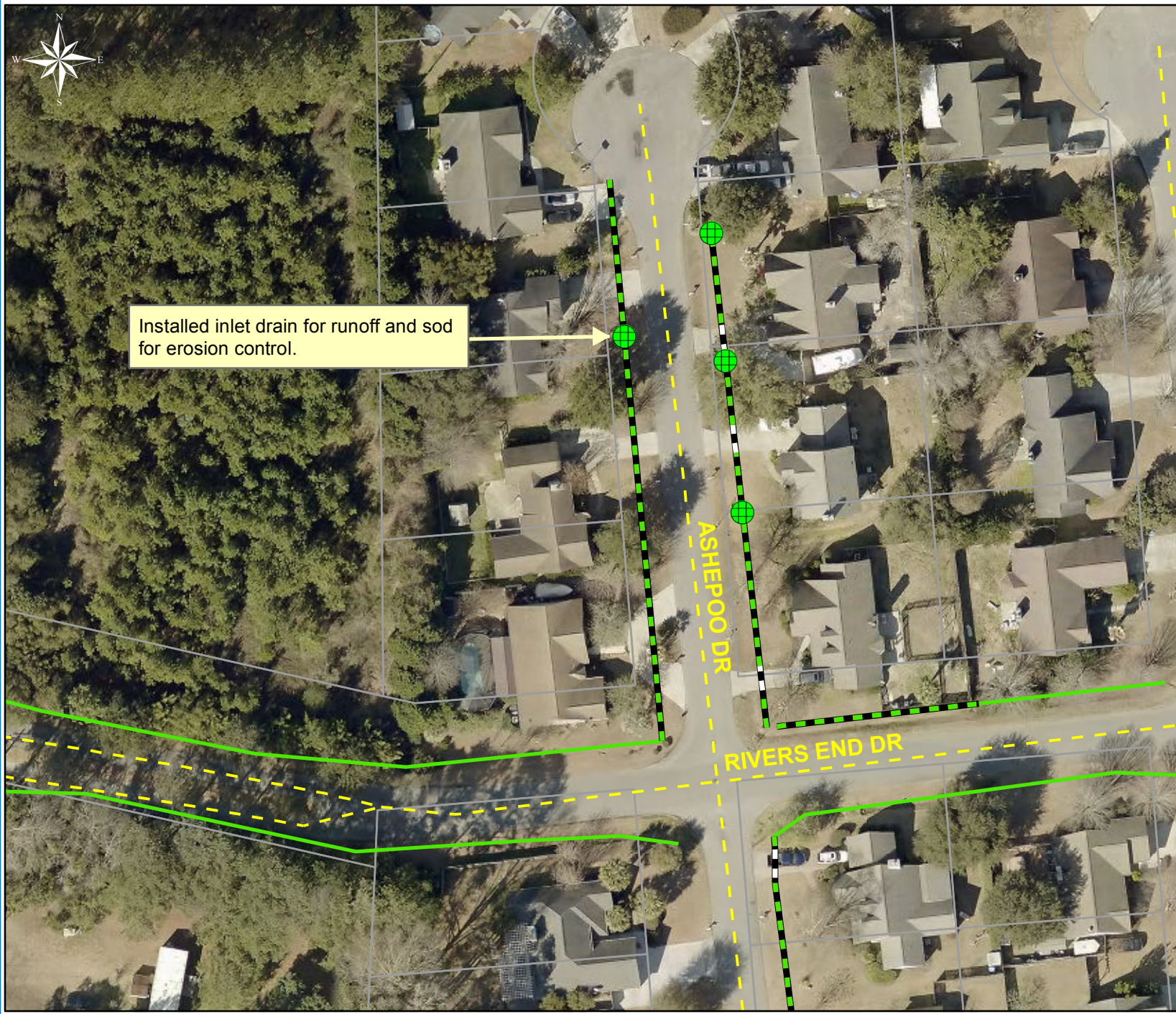


During



After





Installed inlet drain for runoff and sod for erosion control.

Project: Rivers End Subdivision-Ashepoo Drive

Activity: Routine/Preventive Maintenance

Project #: 2016-538

Township: Buffton

Completed: November 2015

Legend	
Drainage Type	
	Access Pipe
	Bleeder Pipe
	Channel Pipe
	Channel
	Stream
	Crossline Pipe
	Driveway Pipe
	Lateral
	Lateral Pipe
	River
	Road Pipe
	Roadside
	Roadside Pipe



1 inch = 67 feet